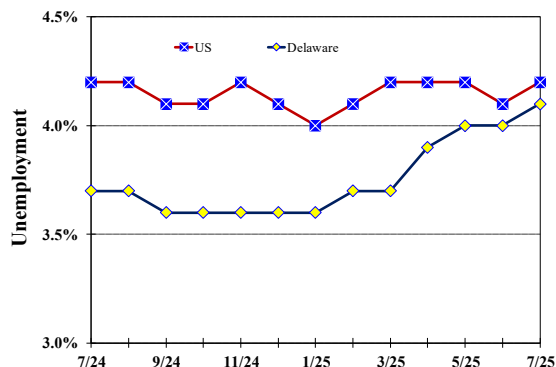


July 2025

Published August 15, 2025

Unemployment Rate

Delaware and US
July 2024 - July 2025



Delaware Civilian Labor Force

Delaware Residents

	July 2025	June 2025	July 2024
Civilian Labor Force	509,600	508,600	507,600
Employed	488,500	488,100	488,600
Unemployed	21,100	20,500	19,000
Unemployment Rate %	4.1	4.0	3.7
US Unemployment Rate %	4.2	4.1	4.2

Source: Delaware Dept. of Labor in cooperation with the US Dept. of Labor, Bureau of Labor Statistics.

Area Unemployment Rates (%)

	July 2025	June 2025	July 2024
New Castle County	4.8	4.6	4.2
Wilmington	6.2	6.2	5.7
Newark	7.5	5.6	5.8
Middletown	4.6	4.2	2.4
Kent County	5.4	4.9	4.8
Dover	6.7	6.0	5.9
Sussex County	4.0	4.0	3.6

Note: Area rates are not seasonally adjusted.

Source: Delaware Dept. of Labor in cooperation with the US Dept. of Labor, Bureau of Labor Statistics.

Monthly Commentary

Delaware's total number of unemployed increased by 2,100 over the year and by 600 over the month to 21,100, marking the sixth consecutive monthly increase in the number of unemployed workers and the highest level since March 2022, when unemployment was 21,500. The state's labor force expanded to a new high of 509,600 in July, an increase of 1,000 workers over the prior month and 2,000 workers above the prior year. Delaware's labor force participation rate also rose to 59.0 percent, narrowing the gap between the state and the US rate of 62.2 percent to 3.2 percentage points, the smallest difference between the two rates since October 2024.

Hours & Earnings

All Employee (Total Private)

	July 2025	June 2025	July 2024
Weekly Earnings	\$1,056.25	\$1,070.27	\$990.89
Weekly Hours	32.5	32.7	31.8
Hourly Earnings	\$32.50	\$32.73	\$31.16

Source: Delaware Dept. of Labor in cooperation with the US Dept. of Labor, Bureau of Labor Statistics.

Office of Occupational and Labor Market Information

For data questions, contact Tom Dougherty (302) 761-8062

Delaware Labor Force Trends

Delaware's seasonally adjusted unemployment rate in July 2025 was 4.1%, up from 4.0% in June 2025. There were 21,100 unemployed Delawareans in July 2025 compared to 19,000 in July 2024. The US unemployment rate was 4.2% in July 2025, up from 4.1% in June 2025. In July 2024, the US unemployment rate was 4.2%, while Delaware's rate was 3.7%.

In July 2025, seasonally adjusted nonfarm employment was 492,900, up from 492,600 in June 2025. Since July 2024, Delaware's total nonfarm jobs have increased by a net gain of 5,700, a rise of 1.2%. Nationally, jobs during that period increased by 0.9%.

Delaware Nonfarm Employment

Jobs at Delaware Locations
Seasonally Adjusted (in 000s)

INDUSTRY GROUP	July 2025	June 2025	Over the Month Change	Over the Year Change†
TOTAL NONAG. EMP.	492.9	492.6	0.3	5.7
CONSTRUCTION	24.7	24.8	-0.1	0.5
MANUFACTURING	26.6	26.8	-0.2	-0.1
Durable Goods	7.9	8.1	-0.2	-0.3
Nondurable Goods	18.7	18.7	0.0	0.2
TRADE, TRANSP., & UTIL.	90.2	89.6	0.6	1.1
Wholesale Trade	12.6	12.6	0.0	-0.1
Retail Trade	51.4	50.9	0.5	0.7
Transp. & Utilities	26.2	26.1	0.1	0.5
INFORMATION	3.4	3.5	-0.1	0.0
FINANCIAL ACTIVITIES	49.6	49.4	0.2	-0.1
PROF. & BUS. SERVICES	65.5	65.1	0.4	0.1
PRIV. EDUCATION & HEALTH	89.8	89.5	0.3	2.6
LEISURE & HOSPITALITY	52.8	53.3	-0.5	0.8
OTHER SERVICES	19.6	19.6	0.0	0.2
GOVERNMENT	70.7	71.0	-0.3	0.6
Federal Government	6.6	6.5	0.1	-0.1
State Government	32.3	32.8	-0.5	-0.6
Local Government	31.8	31.7	0.1	1.3

† Annual changes are not seasonally adjusted.
Details may not add up due to rounding and seasonal adjustment.
Source: US Department of Labor, Bureau of Labor Statistics.

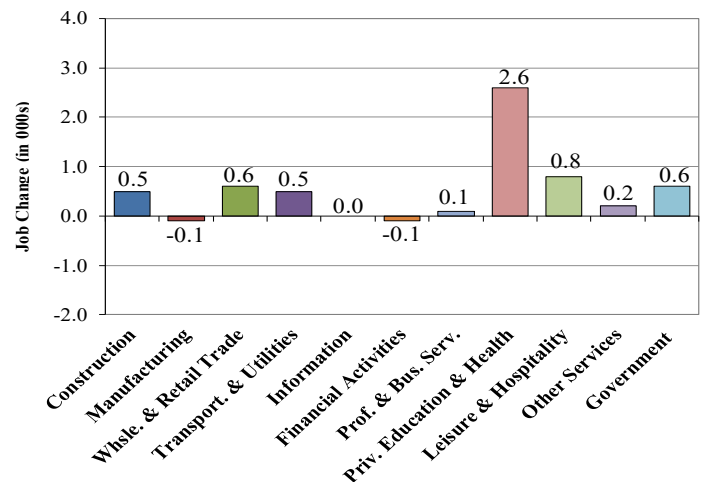
Office of Occupational and Labor Market Information

For data questions, contact Tom Dougherty (302) 761-8062

<https://lmi.delaware.gov/>

Delaware Over-the-Year Job Change

July 2024 — July 2025



Consumer Price Index

All Urban Consumers

	Percent Change to July 2025 from:		
	July 2024	May 2025	June 2025
US City Average	2.7	0.5	0.2
Phila.-Camden-Wilm.*	NA	NA	NA

* Data are published on a bi-monthly basis.

Delaware Annual Net Job Change

Annual Average 2004–2024

